

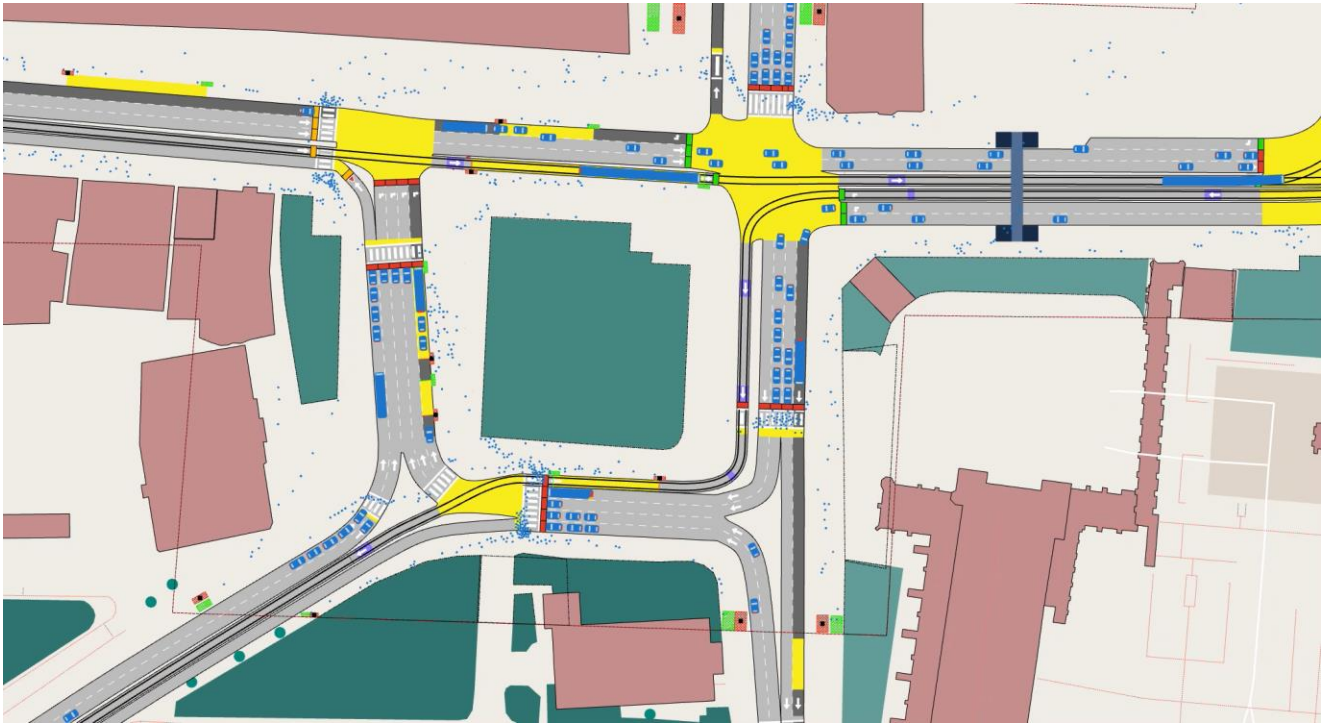
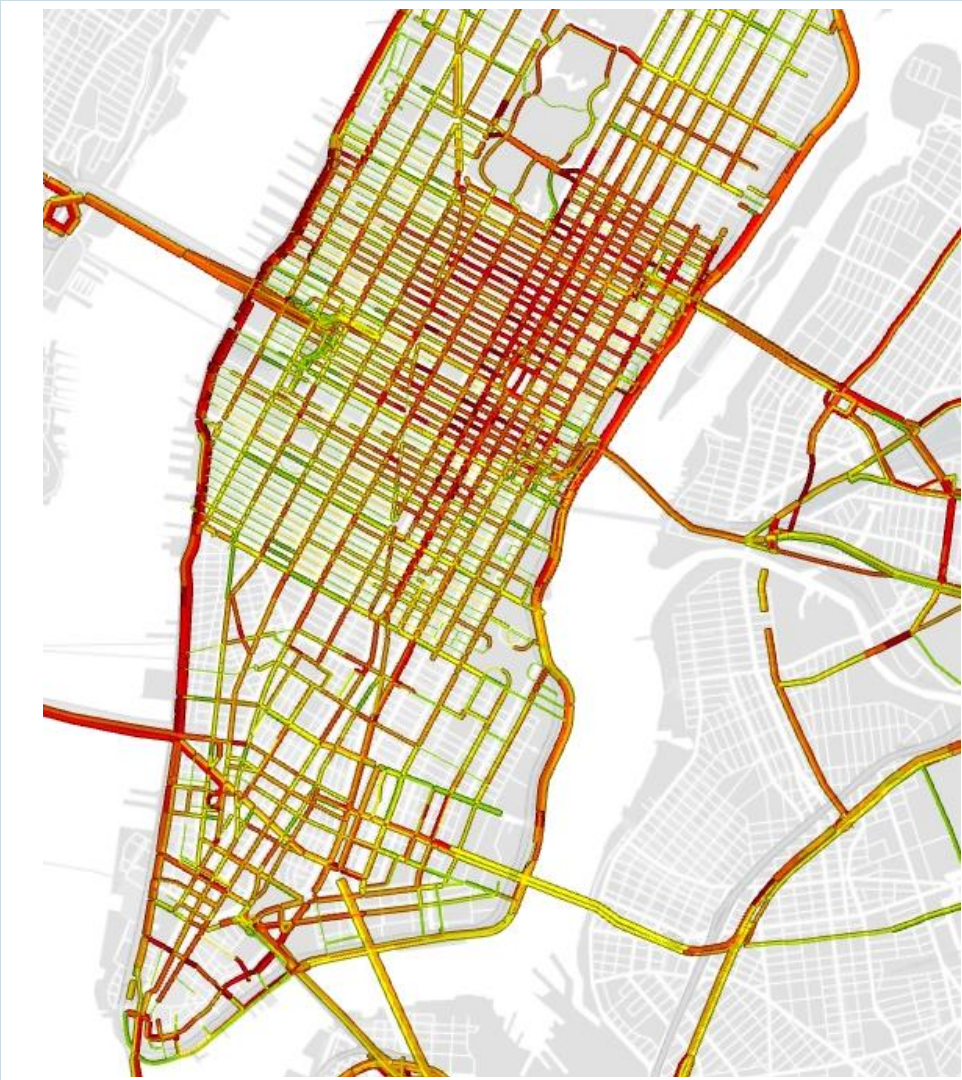


Dades, models i IA

Dimarts, 10 de març de 2026

Josep M. Aymamí. Aimsun

D'on venim?



I on som? Noves dades

Sat Nav



Smart transport card



Mobile apps



Cellphone based



Mobile devices



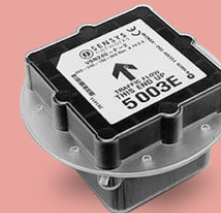
Sensors
Bluetooth-WiFi



Cameras - OCR



Inductive loops



Magnetometers

Sensors

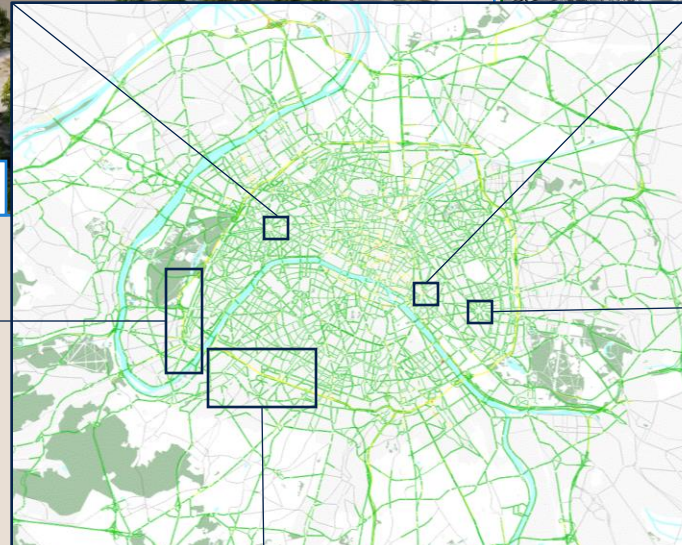
I on som?



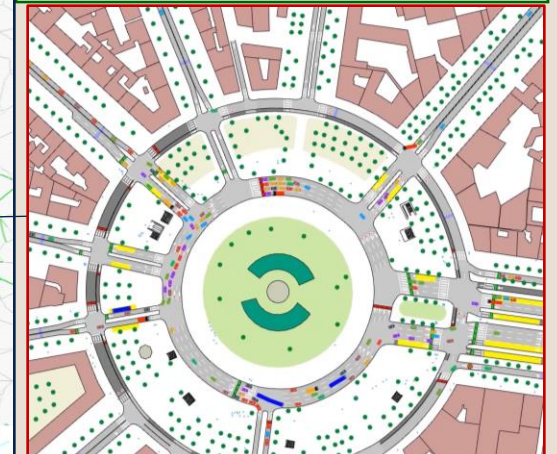
Microscopic



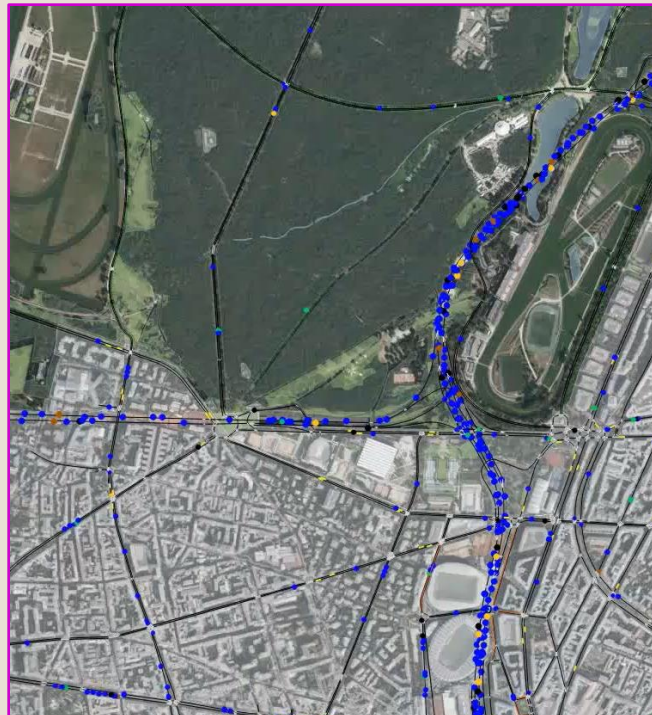
Microscopic bicycles



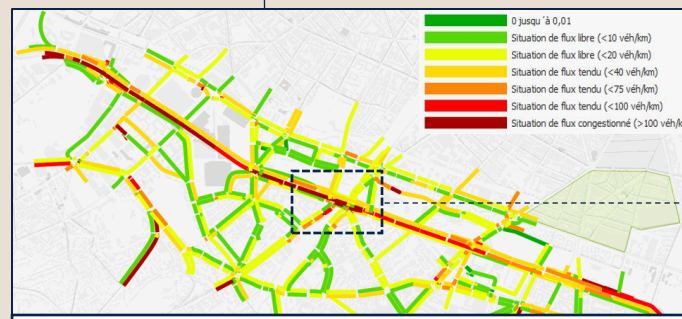
Mesoscopic



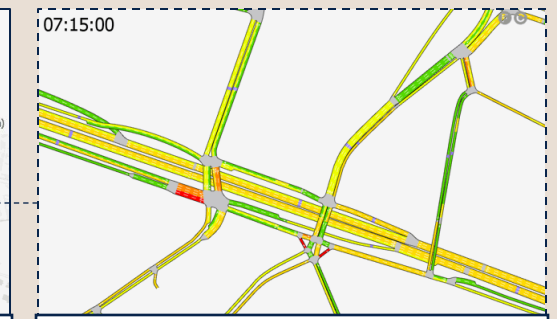
Microscopic pedestrian



Hybrid meso-micro



Mesoscopic



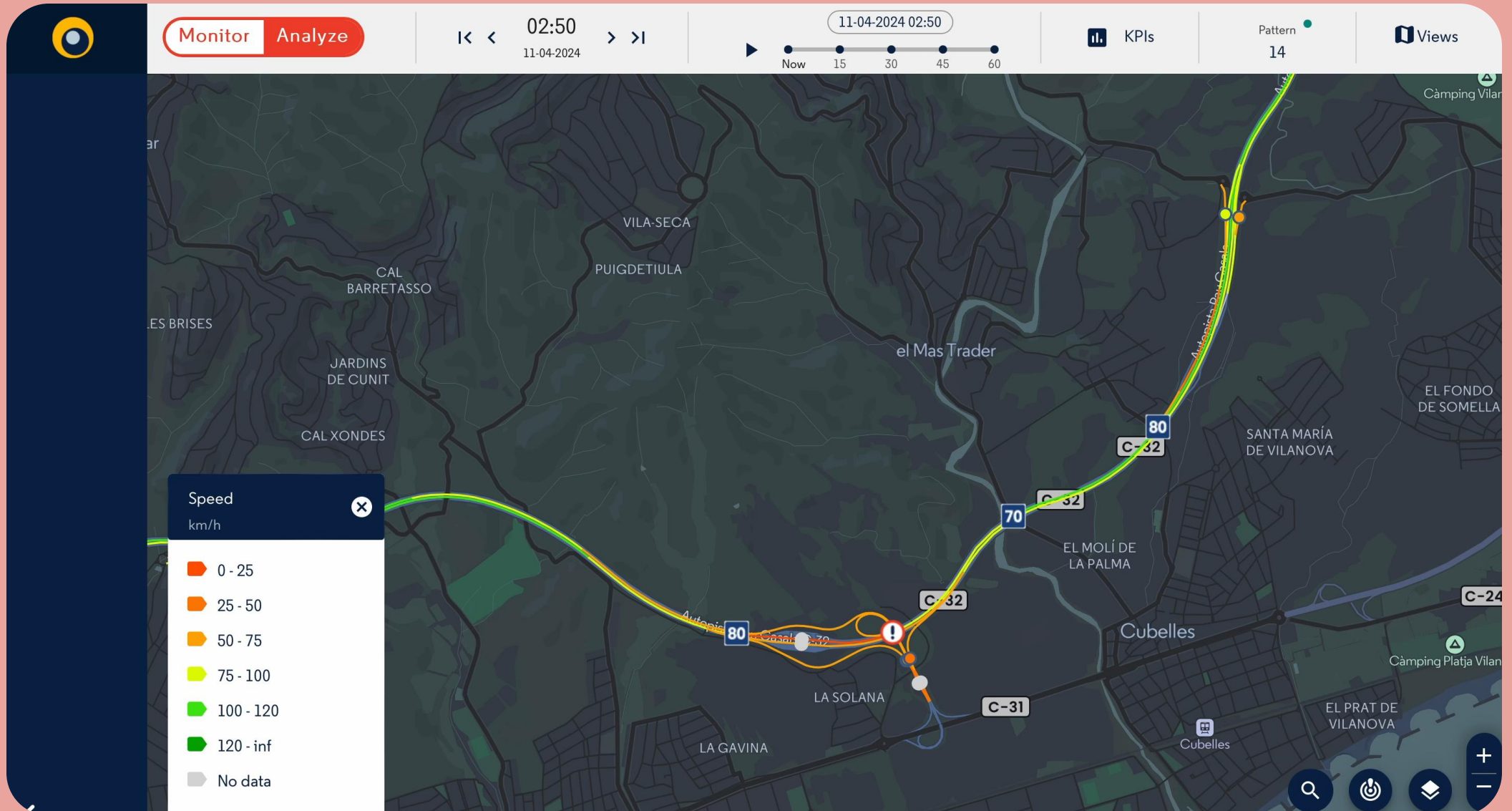
Mesoscopic

I on som?

The image shows a screenshot of a web-based traffic management software interface. The interface is divided into several sections:

- Top Bar:** Contains a "Plan" button in a red circle, followed by dropdown menus for "Geometry base" (set to "base") and "Evaluation" (set to "New evaluation"). To the right are several icons and labels: "Diversion Routes", "Evaluation Area", "Roadworks", "Actions", "Mot Plan", and "Evaluation".
- Left Sidebar:** A dark blue sidebar with a "Tasks" menu icon and a "Sign out" button at the bottom.
- Main Map:** A detailed map of the Orlando, Florida area. Major roads are shown in white and yellow, with route shields for highways like I-4, I-75, SR 429, SR 417, SR 431, SR 408, SR 419, SR 50, SR 528, and SR 27. Landmarks such as Lake Apopka, Lake Jesup, and the University of Central Florida are labeled. A hand cursor is visible over the map, indicating an interactive element.
- Bottom Right:** A search bar and several utility icons (search, refresh, home, etc.). At the very bottom, there is a copyright notice: "© Mapbox © OpenStreetMap Improve this map".

I on som?



On arribarem...



On arribarem..segurament?



Ara... no ens creiem que estem inventant res nou!



Gràcies!

josep.aymami@aimsun.com

ayma@me.com